

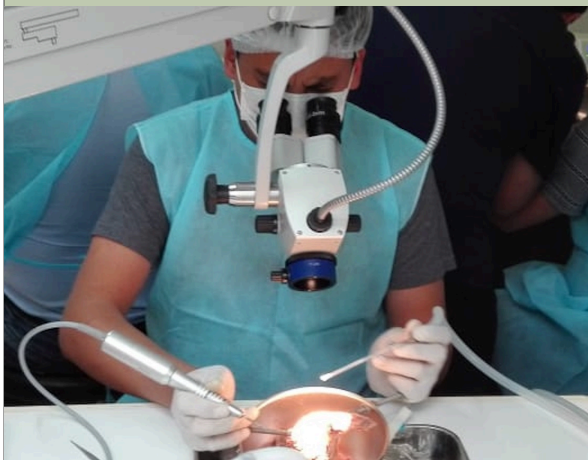
Course Objectives

This course is designed for international residents and Otolaryngologists, although it is open to anyone with an interest in Otology.

The objectives of this course are to give a broad based exposure to general topics in Otology, so that upon completion of the course, one will have a greater comfort level with the understanding of ear disease and its management.

The laboratory sessions are designed to teach middle ear anatomy and correlate this with basic surgical approaches to ear diseases.

Didactic sessions held on the Keck-USC Medical School Campus are designed to review the basics of chronic ear disease, OCR, acoustic tumors, the role of the endoscope in ear surgery, the reading of the CT scan, and how to deal with idiopathic and iatrogenic complications.



Course Faculty

COURSE DIRECTOR

Courtney J. C. Voelker, MD, Ph.D., FACS
Division Director Otology, Neurotology, Skull Base
Director of Pediatric Cochlear Implant Program
Keck USC School of Medicine

DISTINGUISHED GUEST FACULTY

Derald Brackmann, MD, FACS
Associate Professor of Otolaryngology
Keck USC School of Medicine
House Ear Clinic

KECK USC FACULTY

John S. Oghalai, MD, FACS
Chair and Professor of Otolaryngology
Leon J. Tiber and Davis Alpert Chair in Medicine
Keck USC School of Medicine

Joni Doherty, MD, Ph.D., FACS
Associate Professor of Otolaryngology
Keck USC School of Medicine

John Go, MD, FACS
Associate Professor of Radiology
Keck USC School of Medicine

Richard Wagner, MD, FACS
Volunteer Clinical Faculty
Keck USC School of Medicine
Director of Global ENT Outreach

Janet Choi, MD
Otolaryngology Resident Coordinator
Keck USC School of Medicine

USC-KECK SCHOOL OF MEDICINE

INTERNATIONAL TEMPORAL BONE COURSE

SEPTEMBER 18-20, 2020
Los Angeles, California USA



Course description

INTENDED AUDIENCE

This course is intended for Otolaryngologists and residents/fellows in training with an interest in the fundamentals of successful otologic surgery via the study of the temporal bone anatomy, disease management, and applied surgical techniques.

COURSE OVERVIEW

After participating in this CME activity, participants should be able to describe and discuss:

- basic and applied anatomy of the temporal bone
- understand the basic use of the endoscope in otologic surgery
- approach to surgical management of ear disease
- evidence based approaches to otologic evaluation and diagnosis



Topics to Be Presented

- Temporal bone anatomy
- Surgery of chronic ear
- Cochlear implants
- Radiology of the temporal bone
- Iatrogenic and Idiopathic complications
- Ossicular reconstruction
- Stapedectomy
- Management of acoustic tumors
- Surgery for vertigo
- Endoscopic ear surgery

Procedures demonstrated

- Canal wall up mastoidectomy
- Canal wall down mastoidectomy
- Facial recess and extended facial recess
- Endolymphatic sac decompression
- Facial nerve identification
- Middle cranial fossa approach
- Cochlear implantation
- BAHA/SOPHONO implant techniques



Course Location

The John Niparko Temporal Bone Lab
(CSC 135M) First Floor of the center
2250 Alaczar Street
Los Angeles, CA 90033

Course Inscription fee

Lecturers only	\$150.00
Residents/Fellows	\$575.00
Physicians in practice	\$650.00

Contact Information

info@geoutreach.org

Lodging

Hotel

Super 8 Wyndham Hotel
5350 So. Huntington Dr.
Los Angeles, CA 90032

+1 323-225-2310

Reservations

Use rate for **AAA** when reserving to get special rate of 10% off.

[Website link](#)

